



**Refined Webcam 2.0Mega Pixel
Built-in MIC W/UVF**

RIWC-11001

User Manual



Contents

Introduction	2
System Requirements	2
Package Contents	3
PC Camera Introduction	3
Set up PC Camera	4
Software Installation ArcSoft WebCam Companion 3.0	5
Snapshot by ArcSoft WebCam Companion 3.0	7
Software Installation ArcSoft Magic-I	9
Camera Specification	11

Introduction

Welcome to the world of digital imaging. The following information will help you to use your camera to its full capabilities.

For viewing pictures or video, camera must be connected to your personal computer.

This camera is support Microsoft Video Class and plug & play directly without driver.

System Requirements

- Pentium® P4 1.2G CPU
- Free USB2.0 port
- 256MB RAM internal memory minimum
- 500MB free hard disk space
- Internet connection
- CD-ROM drive
- Windows compatible sound card and speakers
- Windows® XP Service Pack II
- Windows Vista™
- Windows 7

Note:

- 1.If your system is Windows XP Service Pack I, please go to www.microsoft.com . It's free to update your system to Windows XP Service Pack II.
- 2.System requirement required by webcam only.
- 3.Before using WCC3, please make sure you have Media Player V.9 or above.

Package Contents



PC camera

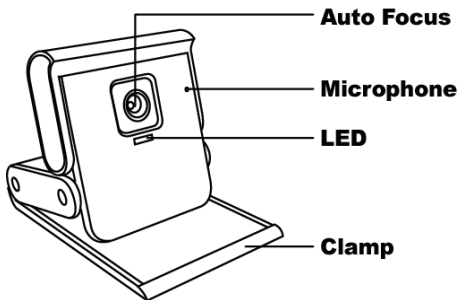


CD-disc



User Manual

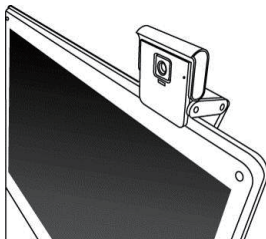
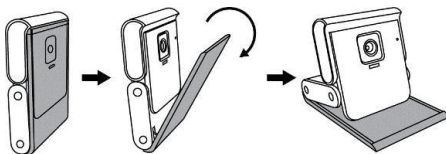
PC Camera Introduction



Set up PC camera

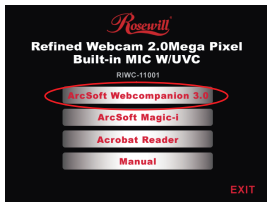
You may mount the PC camera to your laptop or stand on the desk. Plug the PC camera into the USB port of PC or laptop properly.

The focus will adjust automatically according to the subject moving.

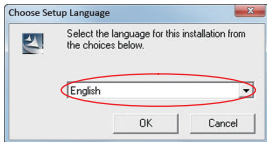


Software Installation ArcSoft WebCam Companion 3.0

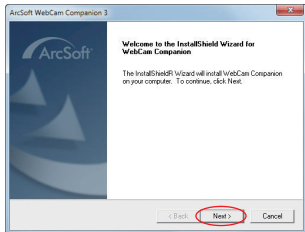
1. Turn on the computer and insert CD installation Disc into your CD-ROM drive. Select and click “ArcSoft WebCam Companion 3”.



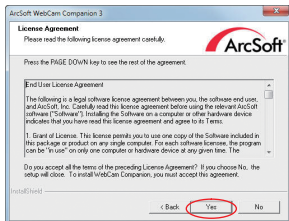
2. Choose Setup Language.



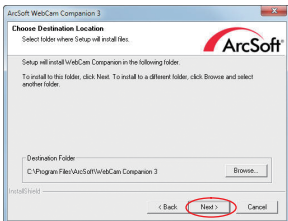
3. Click “Next”.



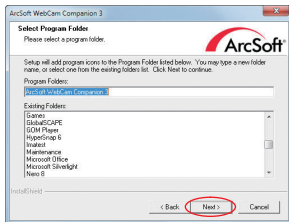
4. Click "Yes".



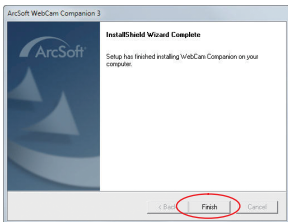
5. Click "Next".



6. Click "Next".



7. Click "Finish".



Snapshot by ArcSoft WebCam Companion 3.0

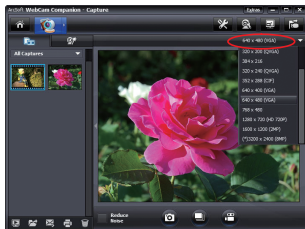
1. Click on the “WebCam Companion 3” icon on the esktop.



2. Choose Setup Language.



3. Click “640x480 (VGA) Setting” to select the suitable resolution.



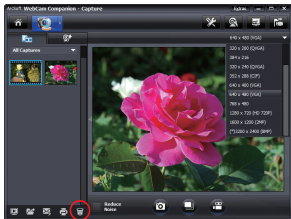
4. Click "Capture" for capture image and the picture is saved.



5. Click "Record Video" to start recording. Click it again to stop.



6. The captured picture and video file will be saved in :
"My Documents \ WebCam Media".

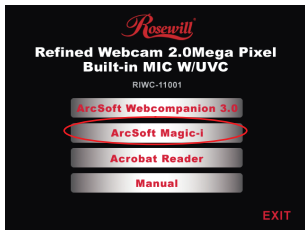


Please note system requirement for WCC3.0 video record 1280x1024 and above

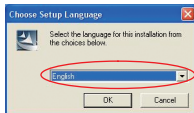
- CPU: Intel Core2 E6550 @2.33GHz(2CPUs)
- Memory: 1.0GB of RAM

Software Installation ArcSoft Magic-i

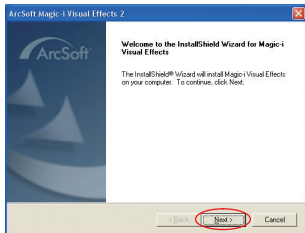
1. Turn on the computer and insert CD installation Disc into your CD-ROM drive. Select and click "ArcSoft Magic-i"



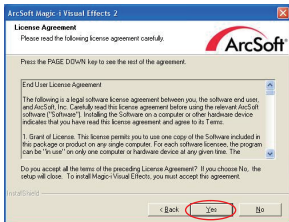
2. Choose Setup Language.



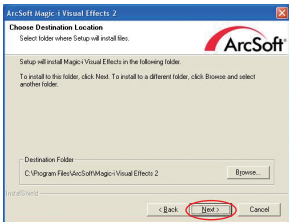
3. Click "Next".



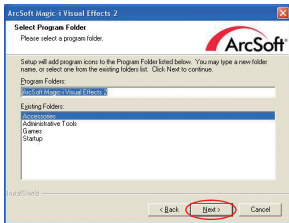
4. Click "Yes".



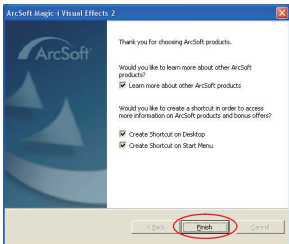
5. Click "Next".



6. Click "Next".



7. Click "Finish".



Camera Specification

Image Sensor	1920x1080 pixels, CMOS
Lens Specification	F2.0, f=3.35mm, Auto Focus Lens
White Balance	Auto
Exposure	Auto
Frame Rate	1920 x 1080 pixels (HD) @ 30fps 1280 x 720 pixels (HD) @ 30fps 640 x 480 pixels @30fps 320 x 240 pixels @30fps 160 x 120 pixels @30fps By MJPG
Focus Range	10 cm to Infinity
PC Interface	USB 2.0
Video Format	WMV, MPG
Audio	Built-in Microphone
Video Capture Res.	1920x1080 / 1280x720 / 640x480 / 352x288 / 320x240 / 176x144 / 160x120 pixels
System Requirements	Support Microsoft Video Class (UVC) Win XP Service Pack II / Vista / 7 MAC OS 10.5 and above is supported by the webcam only
Snapshot	Software
Still Capture Res.	Up to 8M pixels (by WCC3 interpolation)
Power	From USB port
Bundled Software	ArcSoft WebCompanion 3.0 ArcSoft Magic-i

Thank you for purchasing a quality Rosewill Product.
Please register your product at : **www.rosewill.com**
for complete warranty information and future support
for your product.

This symbol on the product or in the instructions means that your electrical and electronic equipment should be disposed at the end of its life separately from your household waste. There are separate collection systems for recycling in the EU. For more information, please contact the local authority or your retailer where you purchased the product.



Rosewill[®]

www.rosewill.com
